



*courtesy of MA SRTS*

## **Walk to school? But how do I find the front door?**

Strategies for designing a walkable school campus

April 2016

Prepared for Mass in Motion, an initiative of the MA Dept. of Public Health

Design Principles:

Safe Streets

Safe Crossings

Safe Drop-off Zones

Safe Parking Lots

Safe Front Doors

Safe Outdoor Spaces


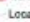
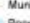
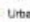

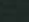
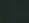
# Construction Documents Progress



# Atherton Hough School



**Legend**

- 1 Student
- 2 Students
- 3 students
-  Atherton Hough School
-  1/2 Mile
-  Local Road
-  Municipal Boundary
-  Pond
-  Urban Boundary
-  Ocean



MassDOT is a 501(c)(3) non-profit organization. All rights reserved. © 2014 MassDOT. All rights reserved.

Join the Alfred S. Letourneau School's

Daily Walking School Bus!



Let's start off the New Year with a new way to get to school! Walk with your friends and be ready to learn when you arrive at school.

Walking School Bus leaves first stop at 7:50 AM

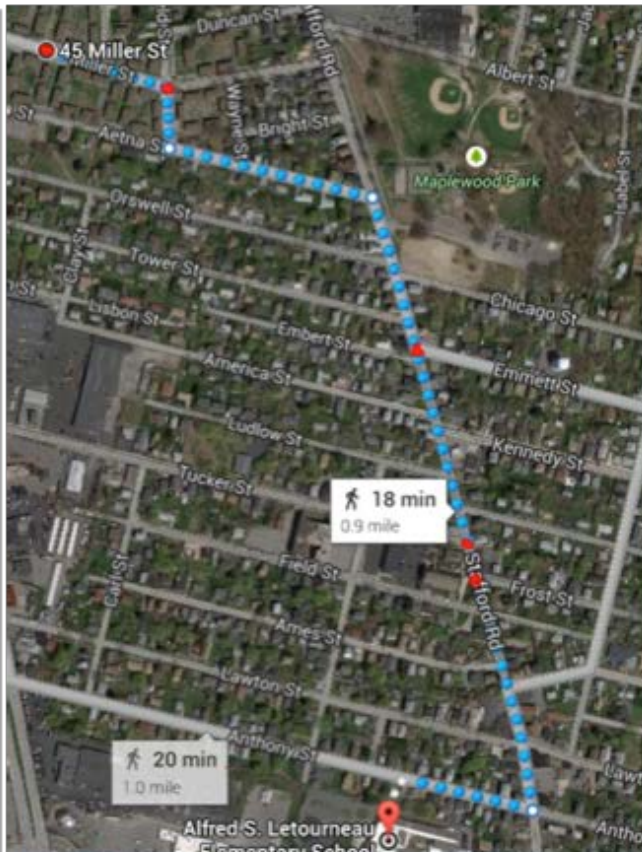
Makes stops at:

1. 45 Miller St.
2. Miller and Garfield St.
3. Emmett St. and Stafford Rd.
4. Tucker St. and Stafford Rd.
5. Frost St. and Stafford Rd.

For more information please contact:

Mr. Assad or Principal Raposo:

508-676-2170





<http://www.saferoutesinfo.org/>